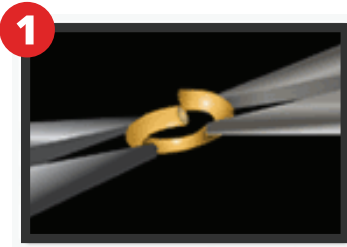
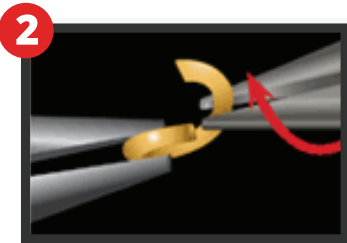


# Quicklink Jump Rings

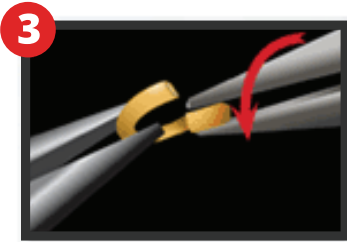
## Assembly instructions



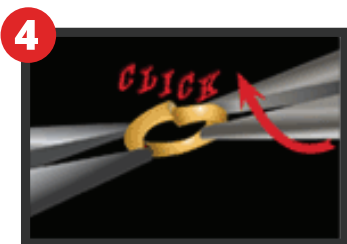
Use two smooth or nylon jaw chain nose pliers to grip the sides of the QuickLink at the 3 o'clock and 9 o'clock positions, with the opening at the top.



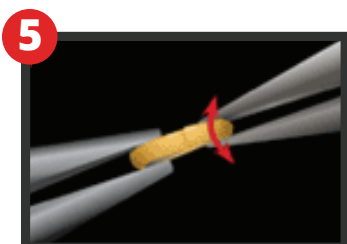
Holding the left side steady, twist the right side of the ring a quarter-turn away from you. Place your chain, charm, or finding onto the QuickLink.



While continuing to hold the left side steady, twist the right side back toward you a quarter-turn past the closed position.



Begin to bring your QuickLink into the closed position. As you twist back, very gently push the right side in just enough to make sure that the edges of the two ends make contact with each other. As you reach the closed position, you will hear a click.



Twist the right side back and forth very slightly aligning the two ends to finish hardening the metal.

# **R**FINDINGS

Empowering jewelers piece by piece

800.422.7624 | [www.rfindings.com](http://www.rfindings.com)